

- **READY TO USE**
- **CONSISTENT**
- **RELIABLE**

LIQUID SOLUTION FOR MICROBIOLOGY SAMPLES

Best testing begins with better samples, and better samples are obtained with the best collection tools. Solmedia offers a full range of liquid-based collection and transport system for all your microbiological sampling, provides an easy, convenient and effective solution for specimen collection, transport and preanalytical processing.



© **Universal Collection and Transport Kit**

A wide range of transport media, including collection, transport and processing systems for the most common Clinical Microbiology samples.

© **Virus Collection and Transport Kit**

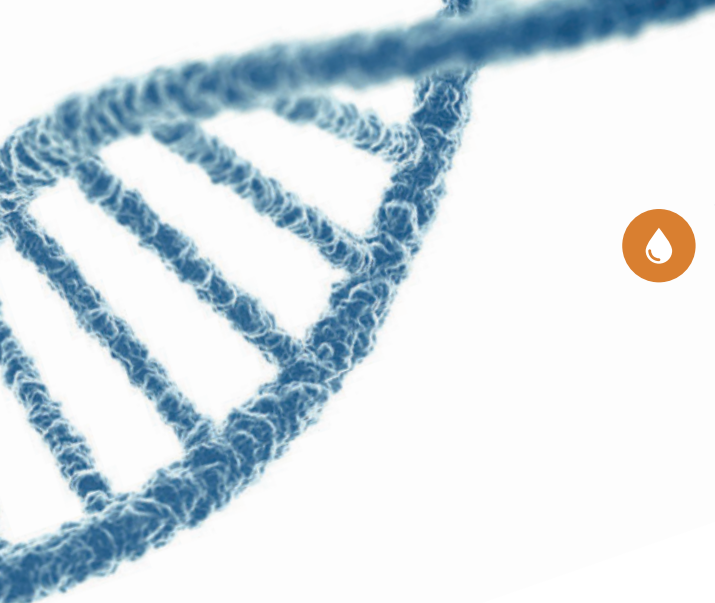
For viral specimen collection, transport and preservation, such as flu, bird flu and HFMD, etc.

© **Saliva Collection Kit**

Cost-effective and non-invasive method to capture saliva samples for DNA/RNA extraction.

© **Environmental Surface Collection Kit**

Environmental sampling systems for accessing microbial presence on surfaces and equipment for food and pharmacy industries.



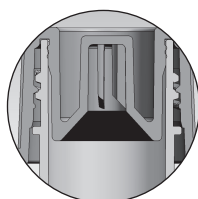
Versatile Liquid Media

Liquid solution, producing a uniform suspension ready for use.

- Liquid Amies maintains viability of aerobes, anaerobes and fastidious microorganisms.
- Liquid Cary-Blair for enteric bacteria, viruses and parasites.
- Virus transport medium compatible with molecular techniques including PCR and with culture.
- Molecular transport medium, powerful formulation kills all pathogens, including mycobacteria, but preserves DNA and RNA.
- Vary fill volume to suit different applications, 1ml to prevent dilution effect, 3ml enough for multiple tests on the same specimen.



10ml



5ml



Leak-proof Transport tube

IATA compliant, for maximum leak tightness during transport.

- Molding cap tightly matched with the tube, passed -95kpa test, for sample integrity and security.
- Special design screw cap, able to capture the shaft of swab and protect samples from contaminations.
- Skirted transport tube with inner conical base, enabling centrifugation of samples and allowing tubes to stand upright on the laboratory bench.
- Color coded labels to indicate different applications.



Optional collection swabs

Optimum absorption and releasing of microorganisms.

- Synthetic fibers, inert and non-toxic to microorganisms and patients, optimum absorption and release.
- Compacted fibers, resistant to shred and free of loose during sampling.
- Plastic shaft, flexible and snaplabe, easy to operate and deposit of swab into transport tube.
- Mini-tip option available for nasopharygeal specimens.



Special design screw cap, able to capture the shaft of swab and protect samples from contaminations.

Universal Collection and Transport Kit

Available in a wide range of transport media, including collection, transport and processing systems for the most common Clinical Microbiology samples.

- Improved pathogen recovery for traditional bacteriology culture.
- Homogeneous sample for more consistent and precise Gram stains.
- Compatible with for molecular assays and rapid antigen testing.

Liquid Stuart

Liquid Stuart is adding the Sodium Glycerophosphate as the reductant-oxidant on the basis of phosphate buffer. It can provide the microbes with a stable pH and hypoxia circumstance, which is ideal for the transportation and preservation of clinic pathogen after sampling, such as *Escherichia coli* and *pyogenic bacillus* in the fester, sputum, secretion and so on.

Liquid Amies

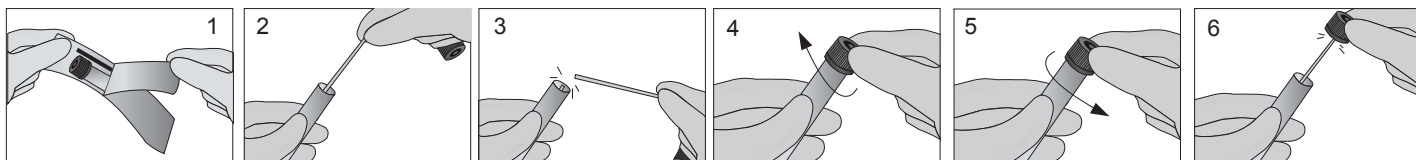
Another modified Stuart medium, replaces glycerophosphate with inorganic phosphate, and add calcium and magnesium salts for controlling the permeability of the bacterial cells and so contributing to their survival. This modified medium yielded a higher percentage of positive cultures. The charcoal on the media neutralizes inhibitors and bacterial toxins, and prolong the viability of pathogenic organisms.

Liquid Cary-Blair

Liquid Cary-Blair is another modified Stuart medium, use inorganic phosphate instead of glycerophosphate, and raise the pH to 8.4. The medium was effective in maintaining the viability of *Salmonella* and *Shigella* in fecal samples, and prevents bacterial overgrowth by *Escherichia coli* and *Klebsiella aerogenes*.



Convenient Use



CAUTIONS: Do not use, if there is a breakage of the pouch, a leakage of the tube, dehydration or contamination in the medium. The shelf life of CITOSWAB SERIES is 12 months, use before the expiration date which is clearly printed on the product unit. Store the device at dry and dark place in room temperature (5 – 25°C), avoid any additional chemicals and physical sterilization processes prior to use.

Ordering information

Transport tube prefilled with liquid medium

| P/N | Medium | Tube | VoL. | Swab |
|-----------|---------------------|------|------|-----------|
| 2118-0018 | ● Liquid Amies | 5ml | 1ml | Tube only |
| 2118-0007 | ● Liquid Amies | 10ml | 3ml | Tube only |
| 2118-0020 | ● Liquid Stuart | 5ml | 1ml | Tube only |
| 2118-0009 | ● Liquid Stuart | 10ml | 3ml | Tube only |
| 2118-0026 | ● Liquid Cary-Blair | 5ml | 1ml | Tube only |
| 2118-0027 | ● Liquid Cary-Blair | 10ml | 3ml | Tube only |

*Custom kit available upon request



Tube only, 5ml: 50sets/rack, 100sets/box



Tube only, 10ml 50sets/rack/box

Transport tube prefilled with liquid medium,with 1 separate regular viscose swab

| P/N | Medium | Tube | VoL. | Swab |
|-----------|---------------------|------|------|---------------------------------|
| 2118-0431 | ● Liquid Amies | 5ml | 1ml | 1 separate regular viscose swab |
| 2118-0407 | ● Liquid Amies | 10ml | 3ml | 1 separate regular viscose swab |
| 2118-0432 | ● Liquid Stuart | 5ml | 1ml | 1 separate regular viscose swab |
| 2118-0409 | ● Liquid Stuart | 10ml | 3ml | 1 separate regular viscose swab |
| 2118-0433 | ● Liquid Cary-Blair | 5ml | 1ml | 1 separate regular viscose swab |
| 2118-0434 | ● Liquid Cary-Blair | 10ml | 3ml | 1 separate regular viscose swab |

*Custom kit available upon request



Virus Collection and Transport Kit

Designed for viral specimen collection, transport and preservation, such as flu, bird flu and HFMD, etc.

- VTM and VTM-N Transport media can be chosen as needed.
- Disposable collection swab, composed of snappable plastic stick and viscose applicator.
- Ready to use and easy to tear package, effectively avoid cross contamination.
- Supplied with Biohazard specimen bag, ensure transport safe and reliable.

VTM Medium

VTM medium consists of modified Hank's-HEPES buffer solution supplemented with bovine serum albumin, gelatin, antibiotic and etc. A phenol red pH indicator is utilized to ensure medium integrity. The medium is osmotically balanced and buffered so that can maintain the viability of virus specimens, while preventing bacteria proliferation during transportation to laboratory.

VTM-N Medium

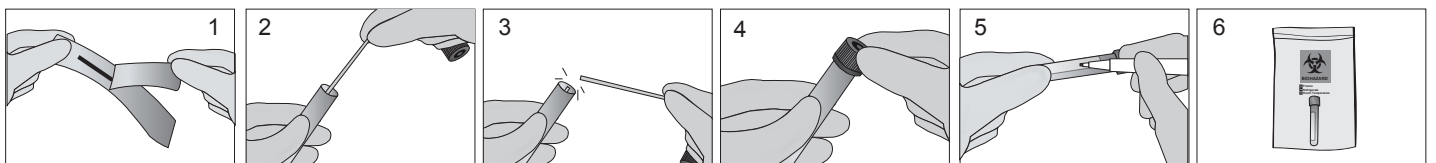
VTM-N medium is Guanidine-based medium, contains the protein deformers and nuclease inhibitors which lyses cells to release and preserve Nucleic acids (RNA & DNA), while makes the virus inactive for safe handling. VTM-N ensures optimal preservation of RNA and DNA at room temperature for up to 48h, but not suitable for culture or rapid antigen testing.

PBS and Normal Saline Solution

Phosphate buffered saline (PBS), including molecular grade PBS when available, and other similar formulations including Delbecco's PBS, can be used to collect and transport samples for molecular RT-PCR SARS-CoV-2 assays. If PBS is not available, normal saline may be used. FDA believes that a sterile glass or plastic vial containing between 1mL and 3mL of PBS or normal saline is appropriate. Specimens can be stored up to 72 hours at 4°C.



Convenient Use



1. Peel off the pouch and collection;
2. Put the swab into the medium;
3. Snap the stick of swab;
4. Screw the tube cap tightly;
5. Label the specimen information;
6. Put into the Biohazard bag.

Ordering information

Transport tube prefilled with liquid medium

| P/N | Medium | Tube | VoL. | Swab |
|-----------|-------------------|------|------|-----------|
| 2118-0012 | ● VTM | 5ml | 1ml | Tube only |
| 2118-0019 | ● VTM | 10ml | 3ml | Tube only |
| 2118-0016 | ● VTM-N | 5ml | 1ml | Tube only |
| 2118-0015 | ● VTM-N | 10ml | 3ml | Tube only |
| 2118-0028 | ● PBS | 5ml | 1ml | Tube only |
| 2118-0029 | ● PBS | 10ml | 3ml | Tube only |
| 2118-0030 | ● Saline Solution | 5ml | 1ml | Tube only |
| 2118-0031 | ● Saline Solution | 10ml | 3ml | Tube only |

*Custom kit available upon request



Tube only, 5ml: 50sets/rack, 100sets/box



Tube only, 10ml 50sets/rack/box

Transport tube prefilled with liquid medium,with 1 separate regular viscose swab

| P/N | Medium | Tube | VoL. | Swab |
|-----------|-------------------|------|------|---------------------------------|
| 2118-0425 | ● VTM | 5ml | 1ml | 1 separate regular viscose swab |
| 2118-0422 | ● VTM | 10ml | 3ml | 1 separate regular viscose swab |
| 2118-0426 | ● VTM-N | 5ml | 1ml | 1 separate regular viscose swab |
| 2118-0424 | ● VTM-N | 10ml | 3ml | 1 separate regular viscose swab |
| 2118-0427 | ● PBS | 5ml | 1ml | 1 separate regular viscose swab |
| 2118-0428 | ● PBS | 10ml | 3ml | 1 separate regular viscose swab |
| 2118-0429 | ● Saline Solution | 5ml | 1ml | 1 separate regular viscose swab |
| 2118-0430 | ● Saline Solution | 10ml | 3ml | 1 separate regular viscose swab |

*Custom kit available upon request



Saliva Collection Kit

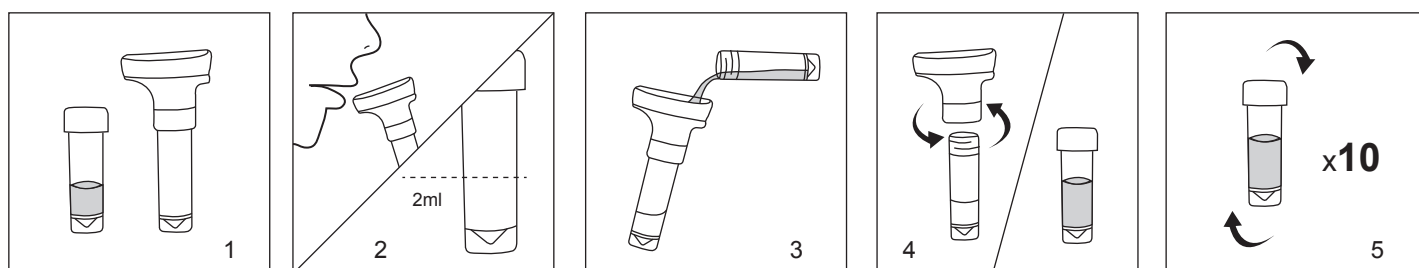
Cost-effective and non-invasive method to capture saliva samples for DNA/RNA extraction.

The Saliva Collection Kit ensures sample stability during storage and transport at ambient temperatures without a need for refrigeration or specialized equipment. The reagent effectively inactivates pathogens (e.g. bacteria) in collected samples. Each collection tube is pre-filled with 2 mL buffer that preserves nucleic acids in samples at ambient temperature. Samples in buffer can be frozen (-20/-80°C) for prolonged periods.



1 saliva collector,
with 5ml transport tube pre-filled
2ml preservation solution.

Convenient Use



1. Remove the kit from packaging.
2. Deep cough and spit into the saliva collector, up to 2ml marker.
3. Add the preservation solution pre-filled in tube.
4. Remove the saliva collector and screw the cap.
5. Invert tube to mix.

Note: DO NOT drink, touch the preservation solution. The solution can be harmful if ingested and may cause irritation if exposed to the skin and eyes.

Saliva Collection Kit

| P/N | Medium | Tube | VoL. | Collector |
|-----------|-----------------------|------|------|--------------------|
| 2118-1701 | Preservation solution | 5ml | 2ml | 1 saliva collector |

*Custom kit available upon request

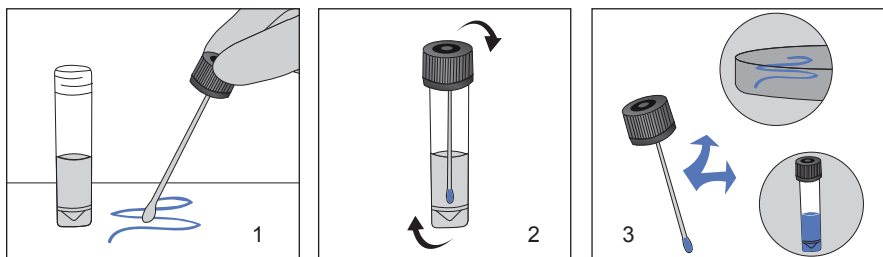
Environmental Surface Collection Kit

Effective sampling of surfaces requires moisture, either already present on the surface to be sampled or via moistened swabs, sponges, wipes, agar surfaces, or membrane filters. CITOTEST provides dilution fluids and rinse fluids include various buffers or general-purpose broth media, for environmental sampling applied in the food, pharmaceutical, biotechnology and cosmetic industries.



Available in 10mL fill volumes, with CITOSWAB high-quality viscose swab. The swab can be securely attached to the cap and makes a convenient "handle" for great control when sampling.

Convenient Use



ESK™ Solution including a series media:

- Neutralizing solution
- Butterfield's Solution
- Buffered Peptone Water
- Lethen Broth
- D/E Neutralizing Broth

1. Pre-moistening the tip of swab with broth and then collecting sample by rubbing.
2. Returning the swab head to the broth after swabbing each area.
3. Shaking the tube vigorously, then plating the sample into the appropriate media and culturing for analysis.

Note: This product is For Laboratory Use only. It is not intended for use in the diagnosis of disease or other conditions.

Neutralizing solution

Neutralizing solution is recommended for detection of microorganisms found on dairy and food equipment disinfected with chlorine or quaternary ammonium compounds. The medium usually contains lecithin, polysorbate 80, and sodium thiosulphate, which is used for neutralizing antibacterial or antimicrobial cleansing agents on surfaces in order to paint a clear picture of any bacteria present

Butterfield's Solution

Butterfield's Solution is a liquid medium recommended for use in qualitative procedure as a diluent in microbial limit testing of pharmaceutical products and in food testing. It was developed to provide a standardized medium for the preparation of sample dilutions, which eliminates the variations in pH associated with the use of distilled water.

Buffered Peptone Water

Buffered Peptone Water is a pre-enriched nonselective buffered solution. It allows for the repair of damaged cells and facilitates the recovery of target bacteria in samples for detection of salmonella in food and dairy plants.

Lethen Broth

Lethen Broth is recommended for use in qualitative procedures for testing quaternary ammonium compounds for antimicrobial activity. It is a growth medium supplied with neutralizing reagent, such as Lecithin neutralizes quaternary ammonium compounds and polysorbate 80 neutralizes phenolic disinfectants, hexachlorophene, and formalin.

D/E Neutralizing Broth

D/E Neutralizing Broth is a liquid medium recommended for use in qualitative procedures for environmental sampling where neutralization of the chemical is important to determine its bactericidal or bacteriostatic activity. This medium will neutralize a broad spectrum of antiseptic and disinfectant chemicals, including mercurial, iodine and chlorine preparations, quaternary ammonium compounds, phenolics, formaldehyde and glutaraldehyde. Growth is indicated by a color change from purple to yellow, and / or cloudiness.



1 separate regular viscose swab



1 regular viscose swab
attached cap in tube
50sets/rack/box

| P/N | Medium | Tube | VoL. | Swab |
|-----------|---|------|------|---|
| 2118-1601 | ● Neutralizing Solution (PBS) | 10ml | 10ml | 1 separate regular viscose swab |
| 2118-1602 | ● Neutralizing Solution (Saline Solution) | 10ml | 10ml | 1 separate regular viscose swab |
| 2118-1603 | ● Buffered Peptone Water | 10ml | 10ml | 1 separate regular viscose swab |
| 2118-1604 | ● Lethen Broth | 10ml | 10ml | 1 separate regular viscose swab |
| 2118-1605 | ● Butterfield's Solution | 10ml | 10ml | 1 separate regular viscose swab |
| 2118-1606 | ● D/E Neutralizing Broth | 10ml | 10ml | 1 separate regular viscose swab |
| 2118-1651 | ● Neutralizing Solution (PBS) | 10ml | 10ml | 1 regular viscose swab attached cap in tube |
| 2118-1652 | ● Neutralizing Solution (Saline Solution) | 10ml | 10ml | 1 regular viscose swab attached cap in tube |
| 2118-1653 | ● Buffered Peptone Water | 10ml | 10ml | 1 regular viscose swab attached cap in tube |
| 2118-1654 | ● Lethen Broth | 10ml | 10ml | 1 regular viscose swab attached cap in tube |
| 2118-1655 | ● Butterfield's Solution | 10ml | 10ml | 1 regular viscose swab attached cap in tube |
| 2118-1656 | ● D/E Neutralizing Broth | 10ml | 10ml | 1 regular viscose swab attached cap in tube |

*Custom kit available upon request

Ordering information

Universal Collection and Transport Kit

| P/N | Description | Packing |
|-----------|--|---------------------------------|
| 2118-0018 | 5ml Transport tube with 1ml liquid Amies | 100Tubes/pack, 8x100Tubes/Case |
| 2118-0007 | 10ml Transport tube with 3ml liquid Amies | 50Tubes/pack, 8x50Tubes/Case |
| 2118-0020 | 5ml Transport tube with 1ml liquid Stuart | 100Tubes/pack, 8x100Tubes/Case |
| 2118-0009 | 10ml Transport tube with 3ml liquid Stuart | 50Tubes/pack, 8x50Tubes/Case |
| 2118-0026 | 5ml Transport tube with 1ml liquid Cary-Blair | 100Tubes/pack, 8x100Tubes/Case |
| 2118-0027 | 10ml Transport tube with 3ml liquid Cary-Blair | 50Tubes/pack, 8x50Tubes/Case |
| 2118-0431 | 5ml Transport tube with 1ml liquid Amies, packaged with 1 regular viscose swab | 50Kits/inner box, 8x50Kits/Case |
| 2118-0407 | 10ml Transport tube with 3ml liquid Amies, packaged with 1 regular viscose swab | 50Kits/inner box, 8x50Kits/Case |
| 2118-0432 | 5ml Transport tube with 1ml liquid Stuart, packaged with 1 regular viscose swab | 50Kits/inner box, 8x50Kits/Case |
| 2118-0409 | 10ml Transport tube with 3ml liquid Stuart, packaged with 1 regular viscose swab | 50Kits/inner box, 8x50Kits/Case |
| 2118-0433 | 5ml Transport tube with 1ml liquid Cary-Blair, packaged with 1 regular viscose swab | 50Kits/inner box, 8x50Kits/Case |
| 2118-0434 | 10ml Transport tube with 3ml liquid Cary-Blair, packaged with 1 regular viscose swab | 50Kits/inner box, 8x50Kits/Case |


Virus Collection and Transport Kit

| P/N | Description | Packing |
|-----------|--|---------------------------------|
| 2118-0012 | 5ml Transport tube with 1ml VTM medium | 100Tubes/pack, 8x100Tubes/Case |
| 2118-0019 | 10ml Transport tube with 3ml VTM medium | 50Tubes/pack, 8x50Tubes/Case |
| 2118-0016 | 5ml Transport tube with 1ml VTM-N medium | 100Tubes/pack, 8x100Tubes/Case |
| 2118-0015 | 10ml Transport tube with 3ml VTM-N medium | 50Tubes/pack, 8x50Tubes/Case |
| 2118-0028 | 5ml Transport tube with 1ml PBS | 100Tubes/pack, 8x100Tubes/Case |
| 2118-0029 | 10ml Transport tube with 3ml PBS | 50Tubes/pack, 8x50Tubes/Case |
| 2118-0030 | 5ml Transport tube with 1ml saline solution | 100Tubes/pack, 8x100Tubes/Case |
| 2118-0031 | 10ml Transport tube with 3ml saline solution | 50Tubes/pack, 8x50Tubes/Case |
| 2118-0425 | 5ml Transport tube with 1ml VTM medium, packaged with 1 regular viscose swab | 50Kits/inner box, 8x50Kits/Case |
| 2118-0422 | 10ml Transport tube with 3ml VTM medium, packaged with 1 regular viscose swab | 50Kits/inner box, 8x50Kits/Case |
| 2118-0426 | 5ml Transport tube with 1ml VTM-N medium, packaged with 1 regular viscose swab | 50Kits/inner box, 8x50Kits/Case |
| 2118-0424 | 10ml Transport tube with 3ml VTM-N medium, packaged with 1 regular viscose swab | 50Kits/inner box, 8x50Kits/Case |
| 2118-0427 | 5ml Transport tube with 1ml PBS, packaged with 1 regular viscose swab | 50Kits/inner box, 8x50Kits/Case |
| 2118-0428 | 10ml Transport tube with 3ml PBS, packaged with 1 regular viscose swab | 50Kits/inner box, 8x50Kits/Case |
| 2118-0429 | 5ml Transport tube with 1ml saline solution, packaged with 1 regular viscose swab | 50Kits/inner box, 8x50Kits/Case |
| 2118-0430 | 10ml Transport tube with 3ml saline solution, packaged with 1 regular viscose swab | 50Kits/inner box, 8x50Kits/Case |

Environmental Surface Collection Kit

| P/N | Description | Packing |
|-----------|--|---------------------------------|
| 2118-1601 | 10ml Transport tube with 10ml Neutralizing Solution (PBS), 1 regular viscose swab attached cap in tube | 50Tubes/pack, 8x50Tubes/Case |
| 2118-1602 | 10ml Transport tube with 10ml Neutralizing Solution (Saline Solution), 1 regular viscose swab attached cap in tube | 50Tubes/pack, 8x50Tubes/Case |
| 2118-1603 | 10ml Transport tube with 10ml Buffered peptone water, 1 regular viscose swab attached cap in tube | 50Tubes/pack, 8x50Tubes/Case |
| 2118-1604 | 10ml Transport tube with 10ml Lethen Broth, 1 regular viscose swab attached cap in tube | 50Tubes/pack, 8x50Tubes/Case |
| 2118-1605 | 10ml Transport tube with 10ml Butterfield's Solution, 1 regular viscose swab attached cap in tube | 50Tubes/pack, 8x50Tubes/Case |
| 2118-1606 | 10ml Transport tube with 10ml D/E Neutralizing Broth, 1 regular viscose swab attached cap in tube | 50Tubes/pack, 8x50Tubes/Case |
| 2118-1651 | 10ml Transport tube with 10ml Neutralizing Solution (PBS), with 1 separate regular viscose swab | 50Kits/inner box, 8x50Kits/Case |
| 2118-1652 | 10ml Transport tube with 10ml Neutralizing Solution (Saline Solution), with 1 separate regular viscose swab | 50Kits/inner box, 8x50Kits/Case |
| 2118-1653 | 10ml Transport tube with 10ml Buffered peptone water, with 1 separate regular viscose swab | 50Kits/inner box, 8x50Kits/Case |
| 2118-1654 | 10ml Transport tube with 10ml Lethen Broth, with 1 separate regular viscose swab | 50Kits/inner box, 8x50Kits/Case |
| 2118-1655 | 10ml Transport tube with 10ml Butterfield's Solution, with 1 separate regular viscose swab | 50Kits/inner box, 8x50Kits/Case |
| 2118-1656 | 10ml Transport tube with 10ml D/E Neutralizing Broth, with 1 separate regular viscose swab | 50Kits/inner box, 8x50Kits/Case |

*Custom kit available upon request

 +44(0) 844 8080 900
+44(0) 844 8080 901

 labsupplies@solmedialtd.com

 www.solmedialtd.com

 Unit 2, Vernon Drive, Battlefield
Enterprise Park, Shrewsbury SY1 3TF

Solmedia[®]
supplying science